

Mutual Respect Performance Series

INTERACTIVE THEATER PROGRAMS

Anne Frank Center for Mutual Respect offers a wealth of stimulating outreach programs to schools, teachers, and students. Our live performance programs are an excellent way to bring Anne's story to life in your community. These programs have been performed at K-12 schools, colleges, religious and community centers, and educational conferences. They have also been performed as additional programming for our traveling exhibits, at the Clinton Presidential Center, the Dallas Holocaust Museum, and many other venues.

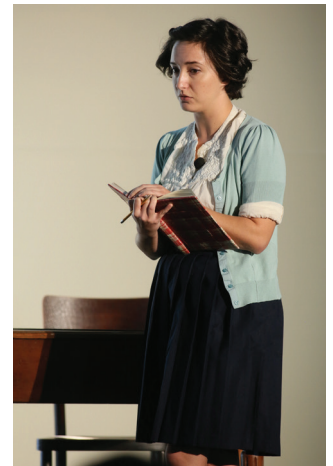
Both productions, in unique ways, can begin a dialogue in your community about what injustices still exist and can spark ideas of ways to confront intolerance and discrimination today. By hosting these programs, you can bring your community together and become steward bearers of Anne's spirit and legacy.

Conversations with Anne

This is our signature one-act solo show, taken directly from Anne's diary. Ideal for student and family audiences, the program provides a uniquely personal glimpse into Anne's time in hiding. After the performance, the actor playing Anne answers questions from the audience in character.

Program including audience participation: 45-60 minutes. Suitable for assemblies, library programs, or individual classrooms. May be packaged with residencies, traveling exhibits, or other programs.

*An adaptation suitable for younger audiences below the age of 10 is available upon request



Alexandra Gellner in
Conversations with Anne

Letters from Anne and Martin

Letters from Anne and Martin is a unique production that combines the iconic voices of Anne Frank and Martin Luther King, Jr. Developed from excerpts from *The Diary of Anne Frank* and Dr. King's *Letter from a Birmingham Jail*, this piece evokes the important messages from these legendary figures, as they write of their hopes and plans for a peaceful and unified world.

Program length including discussion: 45-60 minutes. May be packaged with residencies, traveling exhibits, or other programs.



Alexandra Gellner as Anne Frank and Wesli Spencer as Dr. King.
Photos courtesy of Lisa DeJong

For more information on the theater education programs and availability, please email performances@annefrank.com or call 212.431.7993.

NYCDOE Vendor #ANN022000